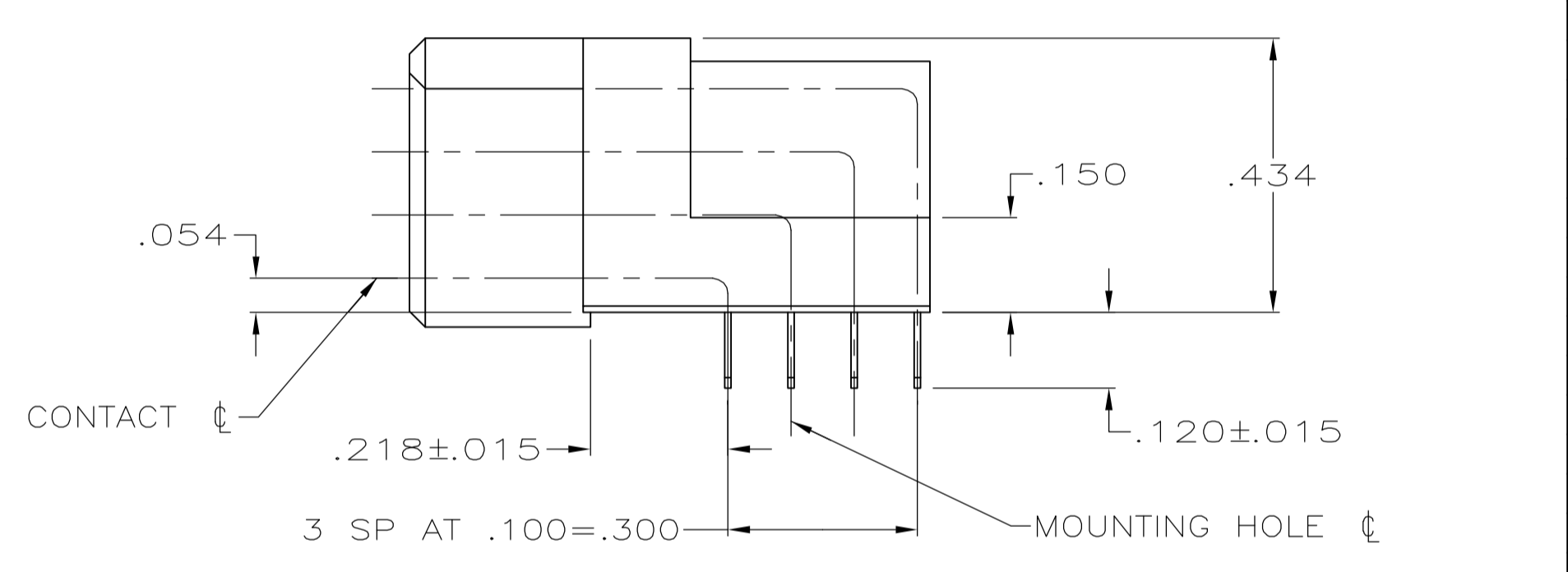
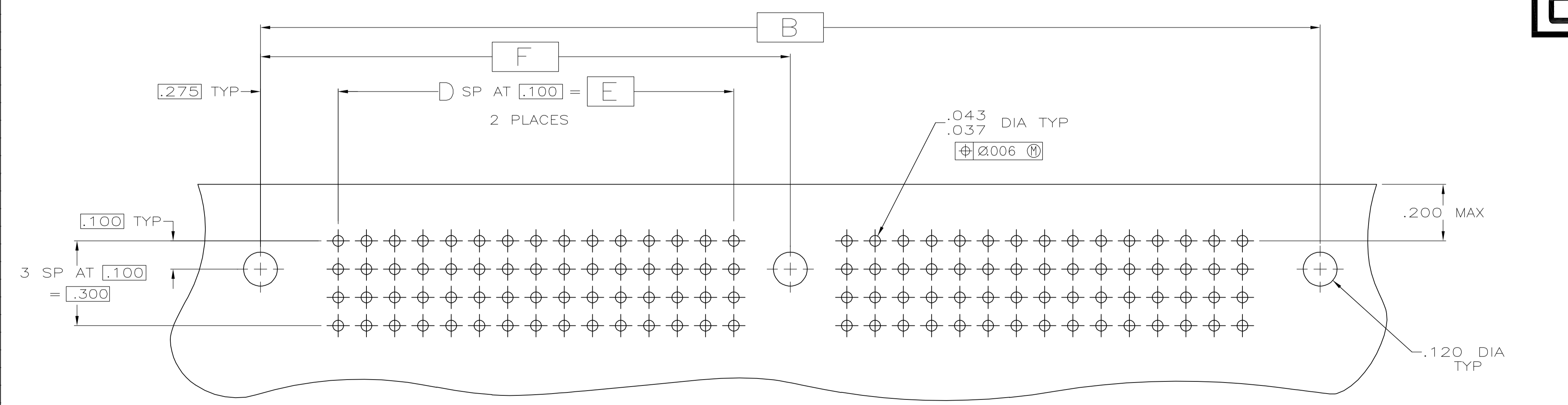


- ① HOUSING MATERIAL: THERMOPLASTIC, BLACK.
- ② CONTACT MATERIAL: COPPER ALLOY.
- ③ CONTACT FINISH: .000050-.000100 NICKEL UNDERPLATE ALL OVER WITH .000030 GOLD IN CONTACT AREA AND .000100-.000200 TIN-LEAD PLATED POSTS.



OBSOLETE



RECOMMENDED P.C. BOARD LAYOUT

3.875	3.400	34	7.324	7.750	8.050	280	534010-8
5.875	5.400	54	11.324	11.750	12.050	440	534010-7
5.025	4.300	43	9.324	9.750	10.050	360	534010-6
5.575	5.100	51	10.724	11.150	11.450	416	534010-5
6.375	5.900	59	12.324	12.750	13.050	480	534010-4
4.975	4.500	45	9.524	9.950	10.250	368	534010-3
4.675	4.200	42	8.924	9.350	9.650	344	534010-2
4.375	3.900	39	8.324	8.750	9.050	320	534010-1
F	E	D	C	B	A	NO OF POSN	PART NUMBER

THIS DRAWING IS A CONTROLLED DOCUMENT.

DIMENSIONS: INCHES	TOLERANCES UNLESS OTHERWISE SPECIFIED:	0 PLC ± -	1 PLC ± -	2 PLC ± -	3 PLC ± .005	4 PLC ± -	ANGLES ± -
THIS DRAWING IS A CONTROLLED DOCUMENT. DIMENSIONS: INCHES TOLERANCES UNLESS OTHERWISE SPECIFIED: 0 PLC ± - 1 PLC ± - 2 PLC ± - 3 PLC ± .005 4 PLC ± - ANGLES ± -		DWG: T. HOFFMAN 08/26/91 CHK: DAVID HOFFMAN 12/10/91 APVD: DAVID HOFFMAN 12/10/91 NAME: DAVID HOFFMAN PRODUCT SPEC: 108-1098 APPLICATION SPEC:		Tyco Electronics Corporation Harrisburg, PA 17105-3608 ASSEMBLY, RECEPTACLE, TBC. 4 ROW, 2 MOUNTING HOLES, 1 GUIDE PIN, .120 POST LENGTH			
MATERIAL	FINISH	WEIGHT	SIZE	CAGE CODE	DRAWING NO	RESTRICTED TO	
① ② ③	③	-	A1	00779	534010	-	
CUSTOMER DRAWING		SCALE	SHEET		REV	M	
		4:1	1 of 1				